

**NMGMS**

P. O. Box 1445

Tupelo, MS 38802

Website: <http://nmgms.brigidsforge.com>**2010 NMGMS Officers****President**, Nancy Roberts25 Amber Lane  
Counce, TN 38326  
(731) 689-5336  
therockhoundlady@yahoo.com**Vice-President**, Clarice TurnerP.O. Box 1441  
Pontotoc, MS 38863  
(662) 488-8287  
hcturner2010@live.com**Secretary**,Kimberly Southworth  
208 County Road 325  
Tupelo, MS 38801  
(662) 706-1702**Treasurer**, John Byzet1209 Queensgate Drive  
Tupelo, MS 38804  
(662) 844-9841  
wa4iax@arrl.net**Appointees****Newsletter Editor**,Robert Langford, RPG  
121 Willow Creek Road  
Saltillo, MS 38866  
(662) 869-2278  
rlangford@cobbenv.com**Webmaster**, Robert Shinn591 Hwy 41E  
Okolona, MS 38860  
(662) 447-0134  
drshinn@bellsouth.net**Field Trip Chair**, Nancy Roberts25 Amber Lane  
Counce, TN 38326  
(731) 689-5336  
therockhoundlady@yahoo.com**Historian**, Susan CurryP.O. Box 61  
Mathiston, MS 39752  
(662) 263-8405  
sgcurry@netdoor.com**Membership Chair**, Floy HawkinsP.O. Box 7312  
Tupelo, MS 38802  
(662) 844-7441  
studiohawkins@gmail.com**Hospitality Chair**, Annette Kelly907 Taylor Street  
Tupelo, MS 38801  
(662) 891-0414  
Akelly907@aol.com**Public Relations Chair**, Reginald Rose636 Highland Circle  
Tupelo, MS 38804  
(602) 840-0113  
Rfrose636@comcast.net**Stamps Chair**,Kathy Westbrook  
2753 Hwy 82 West  
Starkville, MS 39759  
(662) 324-1601**Notes: From The President's Desk**

I heard that I missed out on a really great Memphis Gem and Mineral Show. Alas, I was sorry to not be there, but I was enjoying a fabulous week of quilting/sewing classes, a fashion show, lots and lots of stunning quilts, many vendors and the wonderful city of Paducah, KY. So, now it is time to take off my quilting hat and put back on my rock, mineral and fossil one!

Where has the year gone so far? I find it hard to believe that it will be May 1st this coming Saturday and that we will be having just two more meetings before we break for the summer. This year has been one of tremendous growth and activity for NMGMS. We have 82 members and are still getting inquiries about our club from interested individuals. We have already started to schedule programs for 2011. I have also tried to work in some extra field trips for our members due to the interest expressed by all of you to have a chance to collect before it gets too hot. We had 29 people attend the April 10<sup>th</sup> trip up to Parsons and that made it a lot of fun for everyone!

Our workshops have been well attended and we hope to be able to continue with those this coming fall. Hopefully we will be able to start setting up some actual classes and teach our skills to the public, not only to generate monies for our NMGMS scholarship fund, but also to let the community know more about us.

We have many knowledgeable members in the fields dealing with rocks, fossils and minerals, but we also have many talented people in the field of Lapidary Arts.

This fall we are going to add a Rock Swap to our annual pot

luck picnic and we have had some other clubs express an interest in coming over to join us for that. I am looking forward to this, as I hope it will give us a chance to see what is collected in some of the areas that we do not get to. This will also give us an opportunity to meet some fellow rockhounds and lapidary artists, to exchange ideas and information, to broaden our knowledge of these interests and in general have a very good time while doing this.

As we move on through the rest of 2010, we will need to think about where we have come as a club over the past nine years and where we want this great organization of ours to go in the future. As always, a club is only as good as what you put into it. I wish to thank all of you for your hard work and participation. Keep it up; we're doing a good job!

**Respectfully,**  
**Nancy Roberts**  
**President NMGMS**

**Ongoing: Door Prizes, Door Prizes!**

Yes, NMGMS still needs door prizes. We all like to have a chance to take home something new and different and we look forward to the door prizes that have been given out at our club meetings. We thank all of you members who have been bringing these in for us and hope that you all will continue to help out in this regard. So please check through your collections and projects and see what you could bring in for a door prize at the next meeting. So, happy hunting and make someone else happy too!

**Next Meeting**Saturday, June 19, 2010  
1 p.m. - 3 p.m.  
Location: Lee County Library  
Program: "Leonardo the Dinosaur/DVD"  
See the last Page for directions.

---

**Ongoing: Save those Stamps!**

Kathy Westbrook, our stamp chair, is hoping to have lots of stamps to turn in to the federation so we'll have a good chance at a scholarship. So please watch your mail and start cutting off all

stamps. It does not matter if they are canceled. We are looking for stamps that are not torn or soiled. Special edition stamps and foreign ones are the best, but any will do. Please be sure to cut the stamps off of the envelope very carefully and leave about 1/2 inch of paper around all sides. You may have to fold open the envelope in order to do that. Turn the stamps that you

have collected in to Kathy at our regular meetings. Get all of your friends and relatives saving too. Hey, even your place of business. So, get out those scissors and start today!

---

**NMGMS Minutes for April 17, 2010 Meeting**

Meeting was held at the French Camp Council House Restaurant. Meeting was informal.

The March minutes were approved as written for the Nugget.

Treasurer's Report: \$1738.60 \$100 in dues last month, \$20 in T-shirt sales and \$58.55 from the silent auction

Chairpersons:

**Membership:** We now have 82 members. I am working on printing out some name tags for us. The tags are reusable and the name cards will just slip in, so new ones can be made very easily. We will have the appendix to the membership roster ready to hand out at the May meeting.

**Publicity:** Did anyone see the article that was written about our field trip for the science club that appeared in the Daily Journal on the Monday after Easter? I can email you a copy and Floy has saved the paper for the scrapbook.

**Field Trips:** On Saturday, May 8<sup>th</sup> at 9a.m. we will be hosting a field trip at the Birmingham Ridge Lime pit for Kendal bullock's Cub Scouts. Please come out and help with collecting and identification. Also on May 8<sup>th</sup>, there is a DMC field trip planned for the Thermal City Gold Mine in Union Mills, NC. Meet at the mine at 9a.m. It is \$5 per day to pan at the river and \$40 for a loader full of dirt. I can email you the directions if you are interested.

**Website:** We still need to get the website brought up to date and there are a few corrections that need to be made. I will send Robert Shinn some new photos. Does anyone else have any photos to send or some new ideas?

**Stamps:** I have a huge box of stamps for Kathy Westbrook that Rena did not have a chance to get to. Continue to save stamps. The federations stamp chairman was very glad to hear that NMGMS was back in the stamp collecting business, as he said that we were one of the best suppliers! We want to get a scholarship!!!!

**Historian:**

**Newsletter:** As always, we could use more people writing articles for the Nugget. Anyone want to write up a brief announcement about our microwave oven donation to go along with the photos that we've got?

**Hospitaliy:** May host/hostess are Reginald Rose and Nancy Roberts, June: Robert Langford and Kim Southworth, Sept: John Byzet&??

**Old Business:** Floy took back the damaged oven and got a new one. She has presented it to the library and they are thrilled to have it. Jan Wills said that he would send along our photos and a little comment about our donation to the Neighbors section of the newspaper.

Mary Reed is still working on having the new brochures printed out. Hopefully they will be ready by the May 15<sup>th</sup> meeting.

Our October picnic is set for Saturday October 30<sup>th</sup> at the West Pavilion in Ballard Park on Main Street, Tupelo from 11a.m. until... We would like to do this as a rock swap of sorts where members can bring things to sell or trade. Do we still want to do a potluck or do we want to cook hot dogs? Do we want to invite any other clubs? If so, how about doing a raffle?

**New Business:** We are all ready putting together our program schedule for 2011. Some of the things lined up are: making gem trees, fossil cleaning and prep, mounting micro minerals, making things with tumble polished stones and Bill and Floy's classroom presentation. We will try to get George Phillips again and Terry Panhorst doing "how minerals get their color". Any other program ideas that you would like to see?

We have a tentative field trip lined up for October 2<sup>nd</sup>. This will be to the Memphis Stone and Gravel facility at Senatobia, MS in conjunction with the Memphis and Jackson clubs. This is for petrified wood, agates and fossils.

**Reminders:** The Memphis Rock and Gem Show is April 24<sup>th</sup> and 25<sup>th</sup> at the Agricenter on Walnut Grove Rd. Pass out the flyers!

Our May meeting will be on May 15<sup>th</sup> at the library and the program is "Working with Polymer Clay".

**Submitted by: Jim Roberts**

---

### **FOLLOW UP TO: April 18<sup>th</sup> NMGMS Meeting at French Camp**

Nancy and I were both looking forward to the Club's April meeting at French Camp, MS. We previously visited the site when the NMGMS hosted a picnic at the Jeff Busby Park along the Natchez Trace and saw some of the outdoor astronomy exhibits, but this time we were going to see some of the old buildings and structures that make up the historical section of the campus.

After getting together with the other NMGMS members (the crew) who attended, we had an excellent lunch at the small restaurant. It was a great day and some of us ate out on the open air deck, while the rest of the crew opted for interior seating to get out of the bright sun. The restaurant itself occupies what was once the council house for the Indian tribes who lived in the area. In the nearby field were several old farming implements plus the press and evaporator used to make sorghum from sugar cane. After lunch we walked along a boardwalk to the museum. We were given a brief talk by the hostess, and then we explored the exhibits. Many old tools, photos, and articles of clothing were on display.

A short stroll took you from the museum to a large house from the 1800's. The rooms were all furnished with period furniture and it was interesting to think about how it would have been to live back then. After this it was time for those who were staying for the astronomy show to head over to that section of the campus to attend the lecture scheduled for 4 p.m. Unfortunately Nancy and I had to head back; it's a long drive from French Camp to Pickwick and we didn't want to be driving too much after dark. We had certainly had a great time and enjoyed our visit.



Photo: A cool place to hold our meeting

Submitted by: **Jim Roberts**

Edited by **Robert Langford**

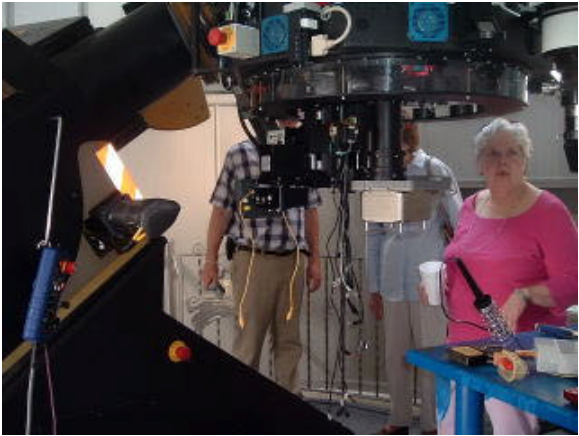
---

### **Additional FOLLOW UP TO: April 18<sup>th</sup> NMGMS Meeting at French Camp**

#### **French Camp Field Trip, Rainwater Observatory**

After the tour of the historic French Camp buildings, some of us went to the Rainwater Observatory to listen to the lectures. We had a little early, so we had a walk around first. There were several people out there with really large telescopes and we were able to examine the telescopes.

Later during the lectures, we listened to the first speaker who introduced us to the earliest "computers". These "computers" were the women of the late 1800's and early 1900's who took the information (including pictures), deciphered it, and then meticulously recorded that information. After the lecture, we took a break for dinner. We had been invited to join the astronomy group for supper. Mary Reed and I were the only ones who stayed for the second lecture. This one was very technical. This lecture was a new theory to show that the background cosmic waves may not be what they appear to be. At the time of this lecture, I understood what was being said, but not enough to really explain it. Although I didn't completely agree with what was being said, it was interesting. The lecture ended about 7:30 pm. Since they were not going to start the stargazing until 8:30 pm, Mary and I decided to go home. We did have a chance, before the lectures began, to go into the observatory to check it out.



I'm glad I went to the NMGMS meeting at French Camp. I really had a good time.

**Submitted By,**  
**Bernice Burkeen**  
**Edited by: Robert A. Langford**

---

**ANOTHER YEAR, ANOTHER GREAT MAGS SHOW!**

Clarice and I met at the Wal-Mart in New Albany on Sunday on our way to check out the Memphis Archaeological and Geological Society's annual gem and mineral show. I drove while Clarice and I conversed during the 80 plus miles to the show's site, the Memphis Agra Center on Walnut Grove Road. We arrived a few minutes early so we continued our conversation until the doors opened. We were not disappointed. Clarice and I went our separate ways once inside, as I wanted to meet all of the MAGS members that have joined our club here in Tupelo. It took me most of the morning because everyone was busy helping out where needed to continue helping make their show a success. I introduced myself to the W. C. McDaniels, Park Noyes and finally to the Lybanons. I had already met Susan Thompson and of course our own founding member George Everett. It was great to see them and also enjoy good conversation. I made the rounds of my favorite dealers including Christy Criss and her brother Bobby. I managed to find some great buys that included some gifts for this year's Christmas celebration. Clarice and I had set our watches in sync so we could meet at 11 because we wanted to hear Dr. Terry Panhorst's presentation of How Minerals Get Their Color. Wow!!! I was so impressed that I asked Terry if he would be available to do the same presentation for our club. I have tentatively booked him for our February meeting. I have to get back in touch with him in the fall to confirm this presentation date. Clarice told him that she thought it would be a good idea to coordinate with his slides and try to have examples of the real minerals for all to see. He thought that was a great idea and asked for our help. Clarice also asked Terry if he had a presentation pertaining to Fluorescent minerals. He said that was a whole other program but said he would look into putting one together. He also said he could probably come up with more programs that would interest all of us and that would benefit anyone interested in Mineralogy 101. I guess we should look into going back to college. We'll be patient Terry and wait for more of your great presentations. Clarice and I headed back to the show for more shopping and conversations. I managed to see the Fluorescent exhibit, the club demonstrators and I also checked out what was happening in the kids sections. After all the walking I was doing, I decided to find a seat and that's when I decided to join the quite large crowd gathering to watch George Phillips' Blue Springs presentation. I had left word with Christy where I would be in case Clarice was looking for me. Clarice decided to join me and we both enjoyed watching George's program. We also shared my emergency food supply of peanut butter and crackers. Yum! Neither one of us had taken the time to eat a bite. I do remember George Everett referring to the food at the show as being similar to eating at a McAlister's' Deli. There was just too much going on for either of us to stop and eat. There were too many beads that kept catching our eyes. It's amazing how many found their way into our tote bags. We lagged behind after George's presentation so we could have a word and also to greet and talk with Joy Rushing, also a NMGMS member from the Jackson area. Clarice and I were also able to introduce ourselves to Jill Smith, the Director of the Union County Museum. Jill is very anxious for our club to hold one of our monthly meetings at the museum. I told her we would get back in touch as soon as we could talk it over with our members. We all walked back to the main show area and I was able to introduce George to Park Noyes. Park had told me earlier that he and his business partner were some of the first to get specimens from the Blue Springs area. George thanked me and I was on my way back to the entrance to meet up with Clarice. We had decided that we were broke and should be heading back to New Albany. Had we seen the

ATM machine in the lobby before heading for the truck, we might have turned around and headed back into the show for more purchases. After saying darn and because we were closer to the truck, we decided to head for home. I shared my buys with Clarice and she shared her buys with me. We took a different route back to Highway 78 that was a lot more fun than the way we went. If my husband Bill had been with us he would have had a heart attack. He absolutely hates going through back roads. I didn't let him know about this route until after I arrived home. I find it so much fun and so interesting when going to these events. Many asked why Nancy wasn't with us. I explained she was attending a quilt show and quilting classes in Paducah, KY. Several people knew exactly where she was because they had friends attending the same show. Jill Smith had been to that show at one time and knew Nancy was having a great time. I have attended many gem and mineral shows and believe the MAGS show is somewhere near the top of my list. For all members that are looking for a well run show to attend with lots of great dealers, the MAGS annual show ranks right at the top of my list.

**Respectfully submitted by,**

**Floy Hawkins**

---

**FOLLOW UP TO: May 8<sup>th</sup> NMGMS Field Trip to Birmingham Ridge Quarry**

The NMGMS hosted an educational field trip of the Cub Scouts of Slatillo, Mississippi to the Birmingham Ridge Lime Quarry on May 8, 2010.



**Slatillo Cub Scouts and Leaders Galore**



Cub Scout Carson found the prize of the Day.

#### **Mosasaurs Tooth**

The Cub Scouts and their leaders said that they had a wonderful time and thanked the NMGMS for hosting the field trip. They all wanted to know when they could go again! Additionally, many of them expressed an interest in attending our meetings.

**Submitted by: Jim Roberts**

**Edited by Robert Langford**



### **Useful Webb Sites**

Here are a few websites that we think everyone would find interesting and useful. This list will be updated as new items are brought to The Nugget.

#### **For Fossils:**

- 1) <http://www.uky.edu/OtherOrgs/KPS/pages/fossilphoto.html> (great for Paleozoic fossils)
- 2) <http://www.lakeneosho.org/Paleolist/index.html#91>
- 3) <http://strata.geology.wisc.edu/mibasin/>
- 4) [www.oceansofkansas.com](http://www.oceansofkansas.com) (great for Cretaceous fossils)
- 5) [www.fossils-facts-and-finds.com](http://www.fossils-facts-and-finds.com) (Fossils stuff and Fossils Coloring sheets for the Kids)

#### **For Rocks and Minerals:**

- 1) [www.Mindat.org](http://www.Mindat.org)
- 2) [www.minerals.net](http://www.minerals.net)
- 3) <http://geology.about.com/library/bl/images/blrockindex.htm> they have great pictures and also have fossil and mineral pictures as well as ID.

#### **Geology Books:**

- 1) "Dictionary of Geologic Terms" by the American Geological Institute

**Respectfully, Nancy Roberts and Robert Langford**

---

### **NMGMS Members Mark your Calendars**

Alan Parks of the Memphis Stone and Gravel Company in Senatobia, MS has set the tentative date of Saturday, October 2<sup>nd</sup> for a field trip to his facility. This trip will be in conjunction with the Memphis and Jackson rock and mineral clubs. Alan will confirm this date as we get closer to October. We will be going through piles of river gravel at this facility and a spray bottle of water is recommended. We will be collecting petrified wood, river agates and chert gravel fossils.

---

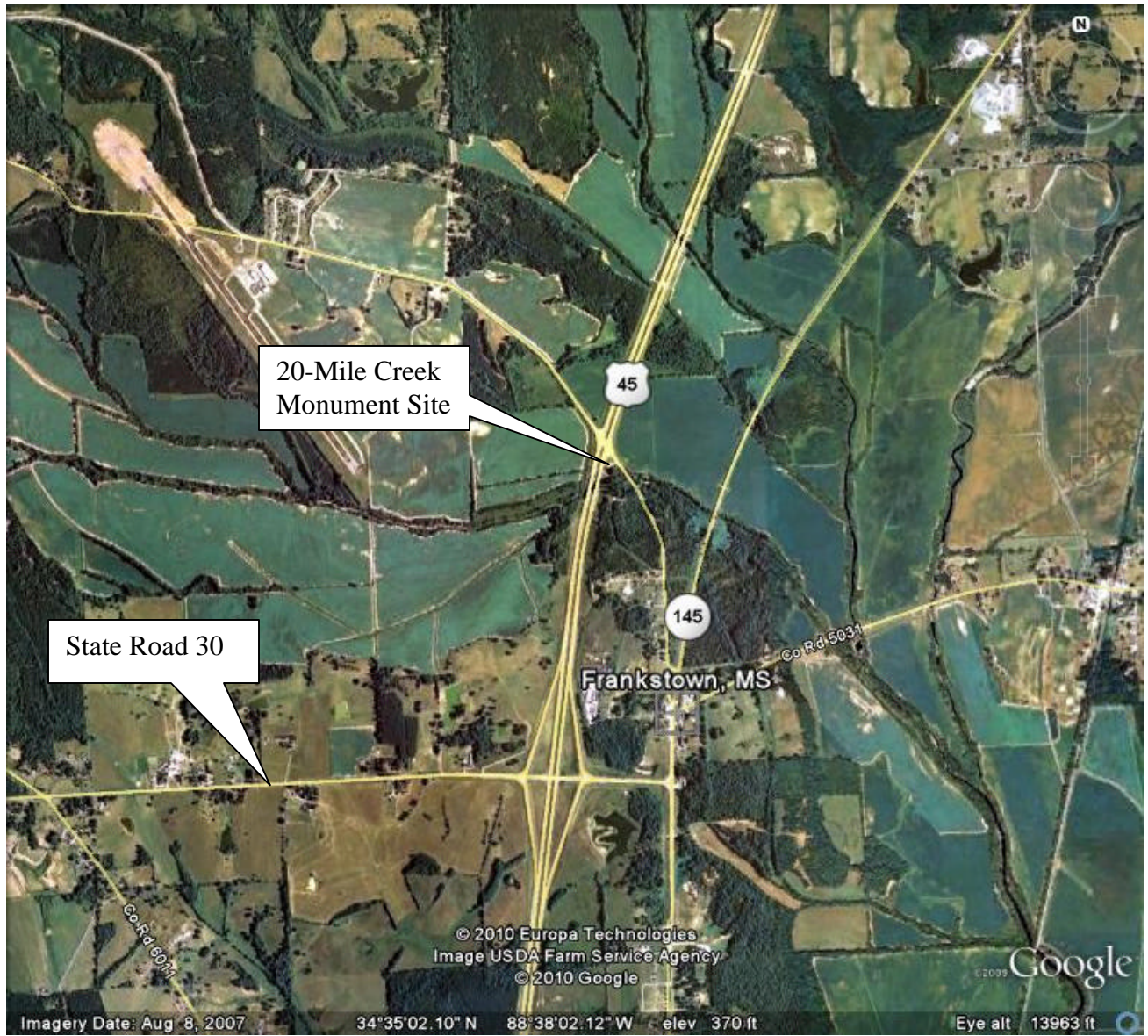
### **NMGMS Members Mark your Calendars**

The June field trip will be to the Monument Site on Twenty Mile Creek in Prentiss County, MS on **Saturday June 5<sup>th</sup>**. We will meet at the site by the Hwy 45 Bridge at 9:30 a.m. Parking is on the NE side of Hwy 45, just off of a side road on the flats by the monument and also under the bridge. We will be sifting through the creek's sand and gravel for shark teeth and other small Cretaceous fossils. This is the famous Frankstown Site. Be prepared to get wet! You will be down in the creek, so you need to be able to go down the bank and get in the water. Wear shoes that can get wet and a walking stick is a good idea. There is a somewhat steep, sandy path of sorts leading down the bank. You can work your way up or down the creek on either side of the bridge. Bring a screening device, like a colander, sieve or homemade screen made out of hardware cloth and a wooden frame. Also you will need a small garden trowel or scoop. Small jars with tight fitting lids, zip loc bags or pill bottles make excellent storage containers for the fossils. There are no facilities here. Be sure to bring plenty of drinking water, a hat, sunscreen, your lunch and watch for poison ivy and snakes on the bank. You will find many different kinds of teeth here, shark, ray, bony fish, mosasaur, and crocodile; also some vertebrae, turtle bone, scutes, petrified wood and lots more. Many of the teeth are good sized, but much is very small. So be sure to check out anything that is black and shiny! This will be lots of fun for all ages. If you plan to go on this field trip, please notify Robert Langford 662-869-2278H 662-871-0184C [rlangford@cobbenv.com](mailto:rlangford@cobbenv.com) [thechainmailman@yahoo.com](mailto:thechainmailman@yahoo.com) 731-689-3684 [cte89087@centurytel.net](mailto:cte89087@centurytel.net)

**Directions:** From Tupelo, take Hwy 45 N, and head toward Booneville. After you drive passed the stop light in Baldwin, go about three miles and watch for the Hwy 30W, Wheeler exit. Do not take this exit! Go under the Hwy30 overpass and continue on Hwy 45 for a short ways. There will be a hillside on the right with lots of tractor trailers on it. Directly ahead, there will be the Twenty Mile Creek Bridge. Cross the bridge and immediately turn right. Then take the first right there by the monument and park.

If you are coming south on Hwy 45, the monument site will be on your left, just before you cross the Twenty Mile Creek Bridge and half a mile or so before the Hwy 30 overpass.

copy



### NMGMS Donation to the Lee County Library

On March 20<sup>th</sup>, the NMGMS donated a microwave unit and splatter guard to the Lee County Library in lieu of an annual donation of \$50 to the library's book fund. The donation was approved by Ms. Bonnie Gaines and Ms. Jan Wills of the library. Ms. Flow Hawkins made the purchase of the oven and splatter guard. The library has expressed its appreciation for the microwave unit, which is available for use in the second floor conference room area.



Front Row Left to Right: Nancy Roberts, Kim Southworth,  
Floy Hawkins, and Robert Langford  
Back Row Left to Right: Cheryle and Liam Langford

**North Mississippi Gem & Mineral Society  
2010 Meeting Schedule**

Sat., May 15<sup>th</sup>, Time 1 to 3 p.m.

Hostesses/Hosts: Robert Langford and  
Reginald Rose  
Lee County Public Library  
Program: Working with Polymer  
Clay, Flow Hawkins and  
Nancy Roberts

Sat., June 19 Time 1 to 3 p.m.

Hostesses/Hosts: Robert Langford and Kim  
Southworth  
Lee County Public Library  
Program: DVD  
"Leonardo the Dinosaur"

July through August Summer Break  
(No Meetings)

Sat., September 18<sup>th</sup>, Time 1 to 3 p.m.

Hostesses/Hosts: John & Ann Byzet  
and Annette Kelly  
Lee County Public Library  
Program: Basic Mineral Identification,  
Robert A. Langford, RPG

Sat., October 30<sup>th</sup>, Time 11 to 3 p.m.

Annual Club Picnic and Possible Rock Swap  
Location: Ballard Park West Pavilion  
Tupelo, MS

**June 5 & 6, 2010:** Birmingham, AL - Alabama Mineral & Lapidary Society. 37th Annual Tannehill Gem, Mineral, Fossil, & Jewelry Show, Tannehill Ironworks Historical State Park. Hours: Sat & Sun 9 - 5. Show is free with paid admission to state park. For info call Gene Blackerby (205) 807-6777 or gene@lapidaryclub.com

**June 5-6, 2010:** Marion, KY—Ben E. Clement Mineral Museum. 5th Annual Ben E. Clement Gem, Mineral, Fossil & Jewelry Show, Fohs Hall, 201 North Walker St. Hours: Sat 9-5, Sun 11-5. Day & night digs available. Contact 270-965-4263 or [www.clementmineralmuseum.org](http://www.clementmineralmuseum.org)

**June 18-20 2010:** Whittier, California - AFMS/CFMS Show and Convention hosted by North Orange County Gem and Mineral Society. Hours: 10-5 daily. Contact Mike Beaumont (714) 510-6037 or [www.nocgms.com](http://www.nocgms.com)  
**August 13-15, 2010:** Gulfport, MS - Harrison County

Reprinted from the *Lodestar* & the SFMS website

---

## ***The Nugget***

### **NMGMS Newsletter**

c/o Robert A. Langford, Editor  
121 Willow Creek Road  
Saltillo, MS 38866

#### **Directions**

##### **Directions to Lee County Library**

Take East Main Street to Madison St. (near United Methodist Church); turn North; go two blocks to the corner of Madison & Jefferson St. Library is there. **Or** from Gloster Street turn east on to Jefferson St. until you get to Madison St.

## **Around the Country**

### **Rockhound Shows**

